

# i.Trek USB GPS Receiver Installation/Configuration Instructions

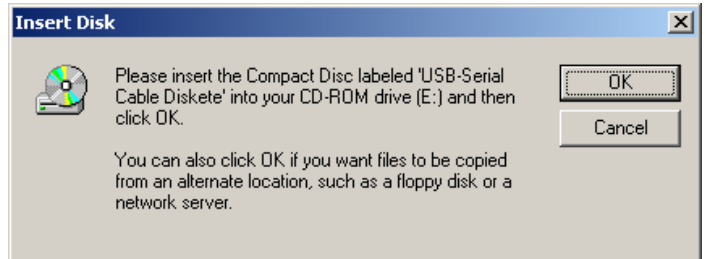


## DRIVER INSTALLATION (CREATES VIRTUAL COM PORT)

Start Windows™.

Connect i.Trek GPS to computer's USB port.

The screen (at right) will appear,  
Click the [ **OK** ] button



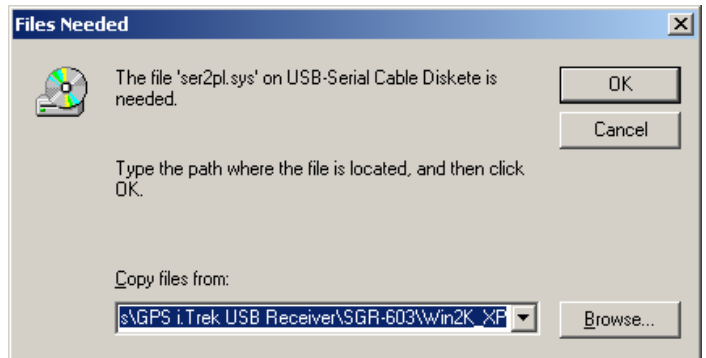
When the next screen appears, select [ **Browse...** ] and navigate your way to the folder:

On the **SOBv90** CD-ROM:  
**Drivers\GPS i.Trek USB Receiver\SGR-603\Win2K\_XP**

or

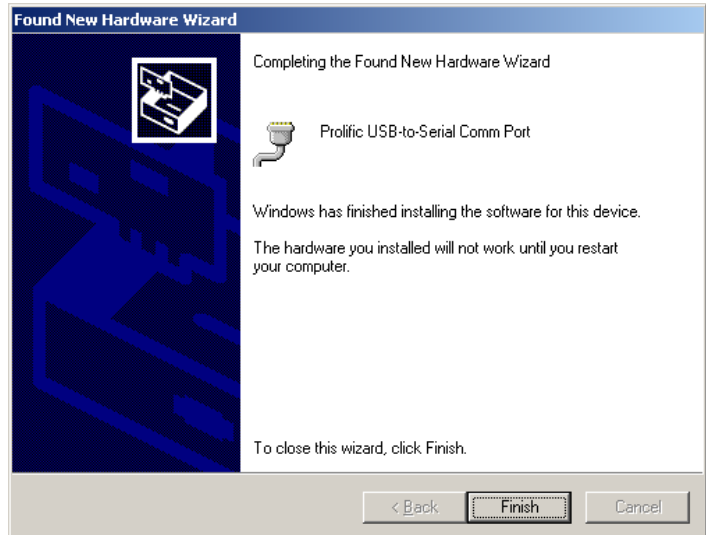
On the **i.Trek** mini CD-ROM  
**SGR-603\Win2K\_XP**

Then select [ **OK** ]



Select the [ **Finish** ] button when the hardware driver install is completed:

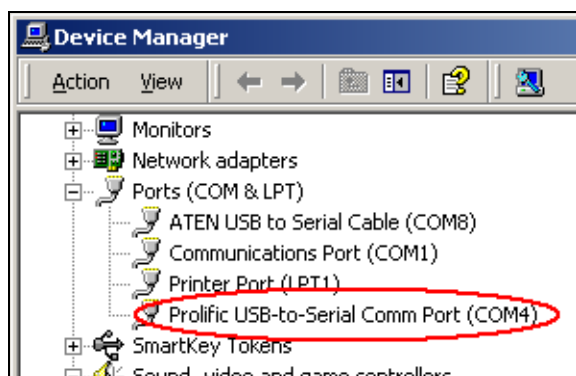
You will then be prompted to reboot your computer to complete the installation of the virtual serial COM port for your USB GPS Receiver.



*Continue over the page to determine virtual COM port created and configure SOB to use it...*

## IDENTIFY VIRTUAL COM PORT CREATED FOR GPS

Use **SOB\_COM.EXE** or **Device Manager** to confirm that the virtual COM port was created successfully and determine the COM number assigned to it.

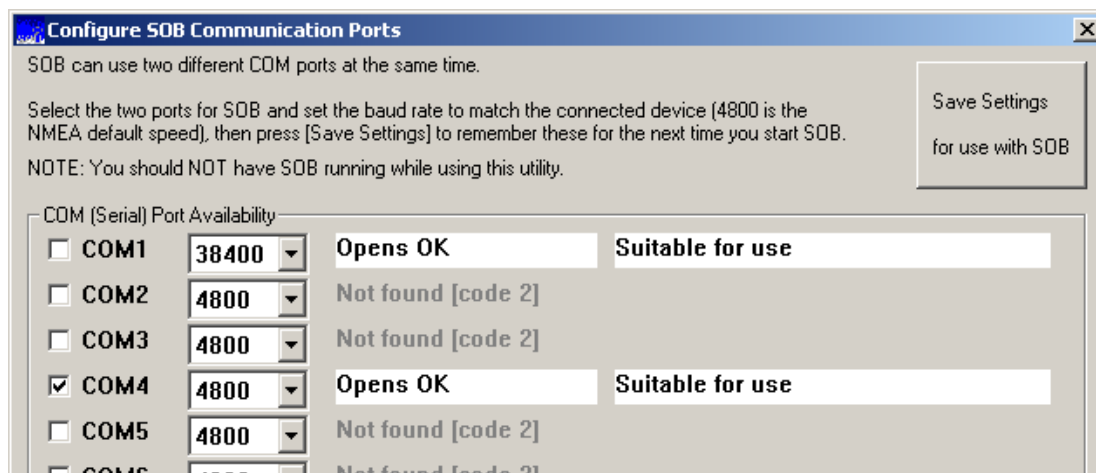


### Running Device Manager

Device Manager is a Windows™ utility program that is very awkward to find.

The easiest way to run Device Manager is to select **Run** from the **Start** menu, then type **devmgmt.msc** and [OK].

**SOB\_COM.EXE** is a SOB utility program for configuring the COM ports that SOB will use to communicate with GPS and other NMEA compatible instruments. SOB\_COM is installed in the **SOBv90** folder, or can be downloaded from the website [www.digiboat.com.au](http://www.digiboat.com.au)



Tick the COM port number that was identified with Device Manager. The iTrek GPS communicates at a speed (baud rate) of 4800 with the computer.

A second COM port can be ticked here for any other NMEA connected devices for use with SOB (eg: AIS receiver, Sonar, Radar, Wind instruments, Speed LOG etc).

When satisfied, press the [**Save Settings for use with SOB**] button.

Note: SOB can connect through a maximum of two COM ports. When a second port is ticked, the rest will be disabled. To change selection, un-tick one of the chosen ports to enable the others for selection.

## START SOB, CONFIRM DATA RECEPTION

When you next start SOB, double-click the chart surface to display the **Raw NMEA Data** form. The "NMEA data Source" box at the top right will reflect the settings made with SOB\_COM.

A steady stream of GPS data, like the sample below, should be scrolling in the data window:

```
$GPGLL,3637.320,S,17452.979,E,234541
$GPGGA,234542,3637.323,S,17452.980,E,1,11,0.9,26.9,M,28.9,M,0
$GPGSA,A,3,05,06,10,15,17,18,23,24,26,29,30,0,1.5,0.9,1.
$GPGSV,3,1,11,05,10,341,38,06,64,239,44,10,52,138,45,15,08,259,3
```

---

**WARRANTY 12 MONTHS:** Please return in original or suitable packaging with a copy of the Invoice/Receipt. Item will be repaired or replaced at the discretion of our technical department.

**RETURNS/REFUNDS:** Item will be refunded if returned within 30 days of the date of the invoice/receipt. Items must be returned in undamaged condition in original packaging. Refund amount will be purchase price less 10%.