

SOB+GRIB (v8)

"HOW TO" Guide

3 Install Driver for C-Map (Jeppesen) USB2MM Card Reader



Jeppesen Marine (formerly "C-Map") released their second version of the orange USB MMR Card Reader for USB2 and Vista in 2006.

Refer to this webpage for further information and links to download the driver: www.digiboat-int.com/downloads.asp#bm3

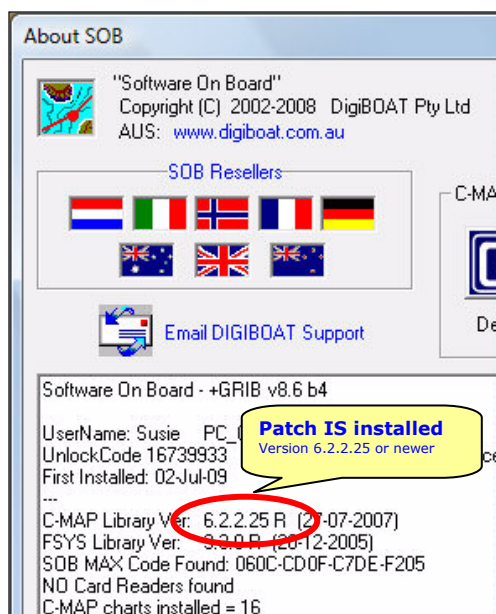
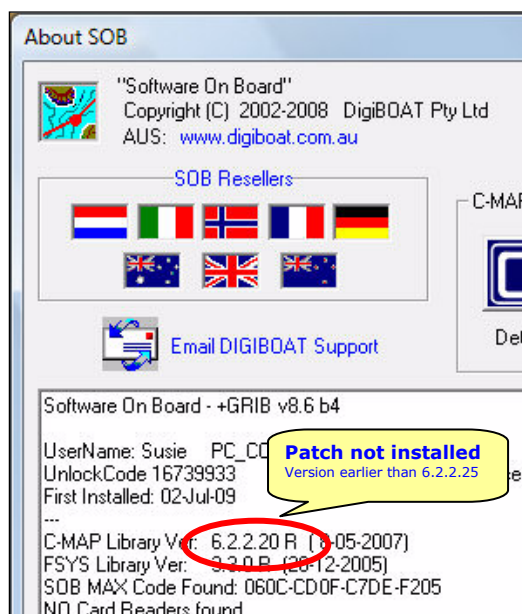
As @ Feb 09, a "patch" is required for SOB to update it and make it compatible with the USB2MMR (not, this is not required for the original USBMMR).

The patch can be downloaded (instructions are included in the ZIP file) here: http://www.digiboat.biz/downloads/sob/USB2MM_cmWin32.zip

Many users experience difficulties installing the USBMMR Driver and confirming that SOB can read the cartridge charts. This HOWTO should be carefully followed to ensure successful installation.

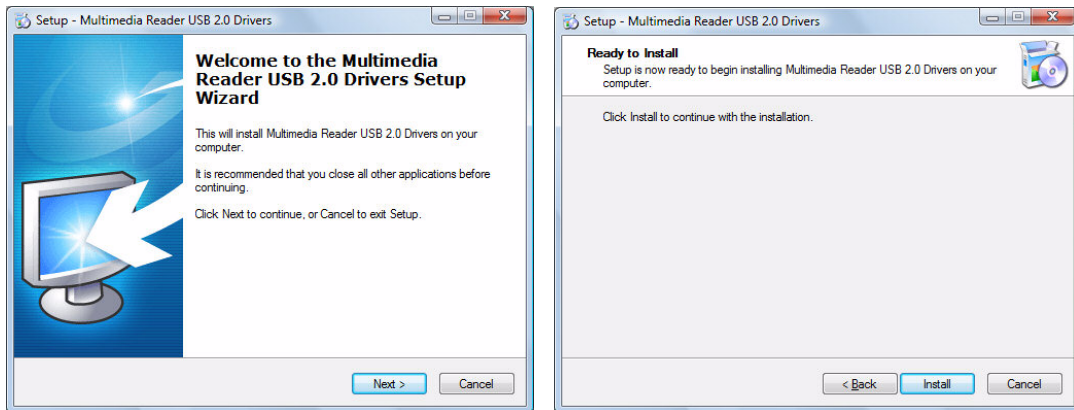
Install SOB and Test

1. Install SOB
2. Confirm that SOB starts and runs OK
3. Exit SOB
4. Apply the "patch"
5. Restart SOB
6. Open the "About SOB" information window (press the green-question-mark button on SOB's main toolbar) to make sure the patch has been correctly applied.
7. C-MAP Library Version must be newer than ver 6.2.2.20 (Min compatible lib ver is 6.2.2.25). If the "C-Map Library Ver" is not 6.2.2.25 or newer, then exit SOB and return to Step 4.

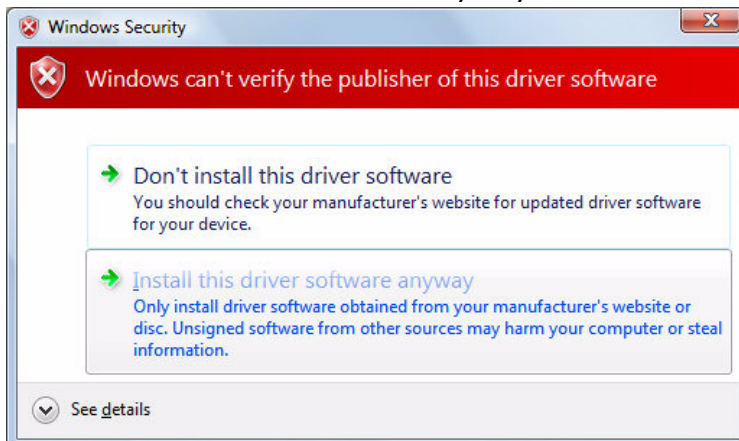


Install the USB2MMR Card Reader Driver

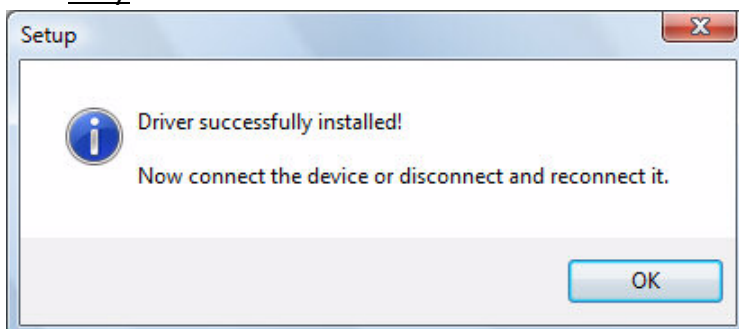
8. DO NOT PLUG IN THE READER UNTIL TOLD
9. Run "USBMMR2_Driver_Setup.exe" the Driver Setup file for the USB2MMR
10. Select "Allow" when prompted with "User Account Control" window



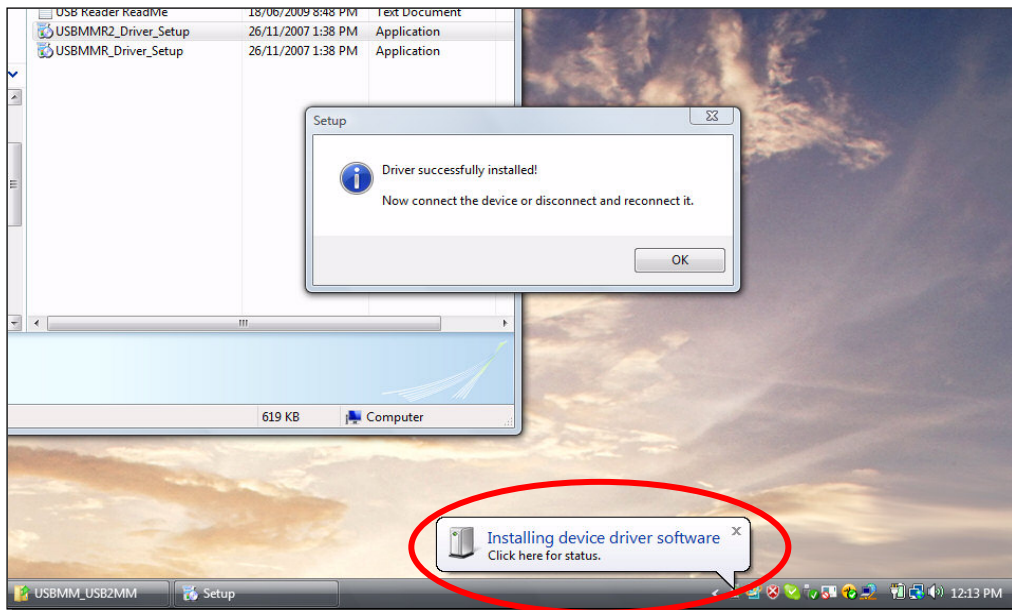
11. Select "Next >", then select "Install" on the next "Setup ..." window.
12. On the "Windows Security" window, ignore the warning and select "Install this driver software anyway"



13. When this next "Setup" window appears, plug in the USB2MM Card Reader...
DO NOT PRESS "OK" YET (wait till next Step)
(Make a note of which USB socket you use on the PC. You should continue to use only this USB connection until we're sure the installation is successful)

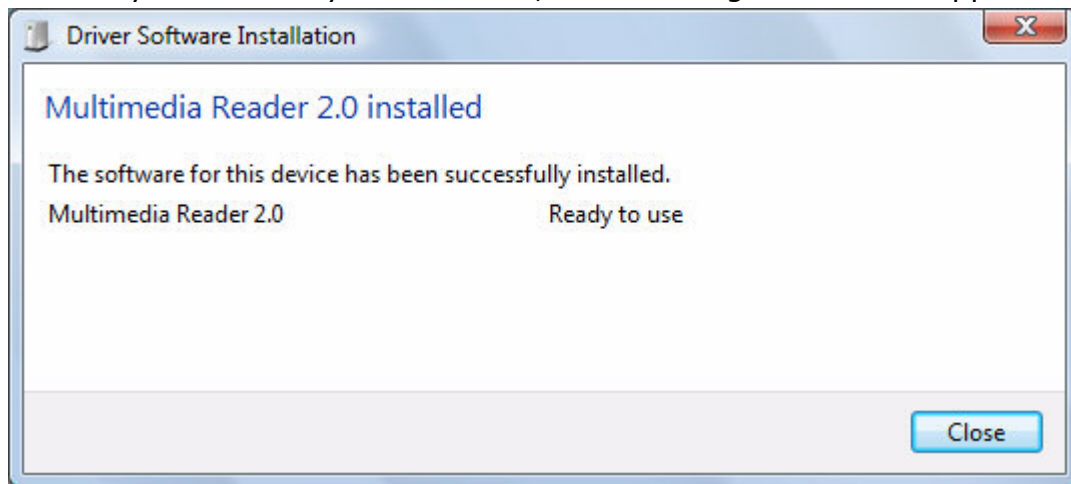


14. After connecting the USB2MMR to the computer, a double-beep should be heard, followed by one or more yellow "balloons" on the Windows™ TaskBar.



When the yellow balloon changes to "Multimedia Reader 2.0 installed", click "OK" on the "Setup" window to close and end the driver installation.

15. Note: if you click the yellow balloon, the following window will appear:



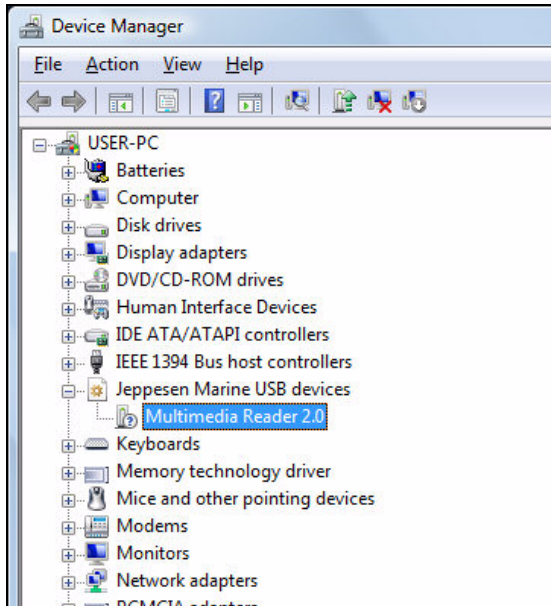
At this point, your USB2MMR Card Reader should be correctly installed, and the chart cards inserted should be visible to SOB.

At the rear of the USB2MMR is a LED (light). At this point the LED should be red. When SOB starts, the LED will flicker then turn green and stay a solid green colour until SOB exits.

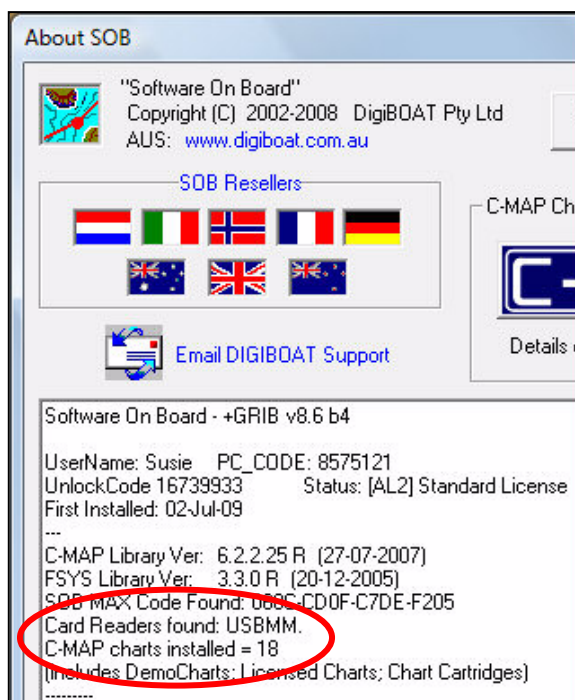
The remainder of this HOWTO instructs how to check and confirm that the Reader is in fact correctly installed and "seen" by SOB.

Testing and Diagnosing the USB2MMR Reader Installation

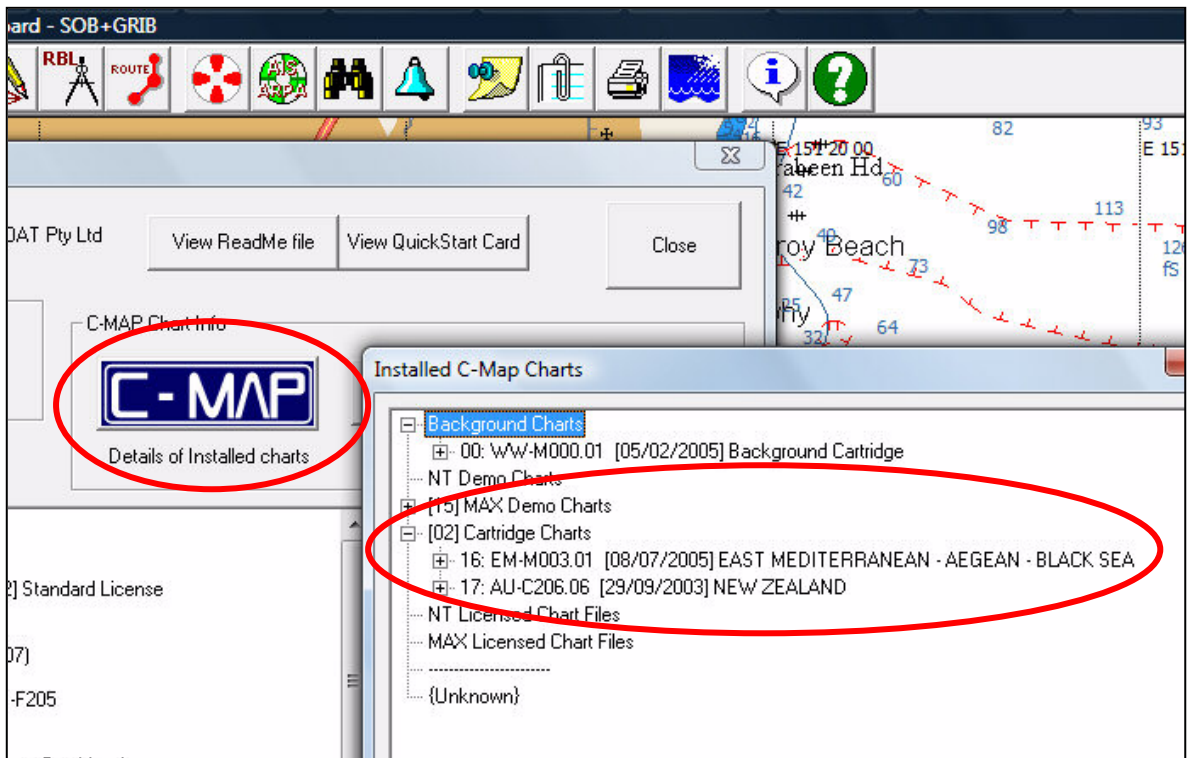
1. Ensure SOB is not running, and the USB2MMR is connected to the computer
2. Check the Reader LED – it should be red.
3. Disconnect the Reader from the PC.
4. Reconnect the Reader (use same USB port)
5. Run Windows™ **Device Manager**
The USB2MMR device will appear as shown in next screenshot:



6. Restart SOB, the LED on the USB2MMR should flash a few times (red/off/green) as the inserted chart cards are loaded into PC memory, then the LED should stay solid green.
7. Open the "About SOB" window, and confirm that the **USBMM** is listed, and if one chart card is inserted in the Reader, then SOB will report **17** charts installed, if two chart cards are inserted in the Reader, then **18** charts will be installed:



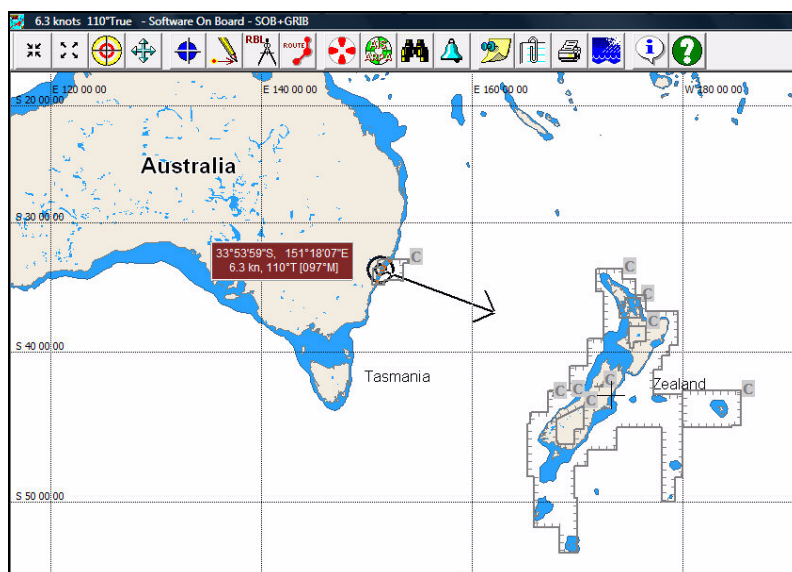
- For further detail about installed charts, press blue **C-MAP** button for more comprehensive information. All charts found in attached Readers are listed under the "Cartridge Charts" heading:



This example shows two chart cards inserted: (1) an NT+ c-card in the left slot for NEW ZEALAND, and (2) an SD MAX chart card in the right-slot for the EASTERN MED

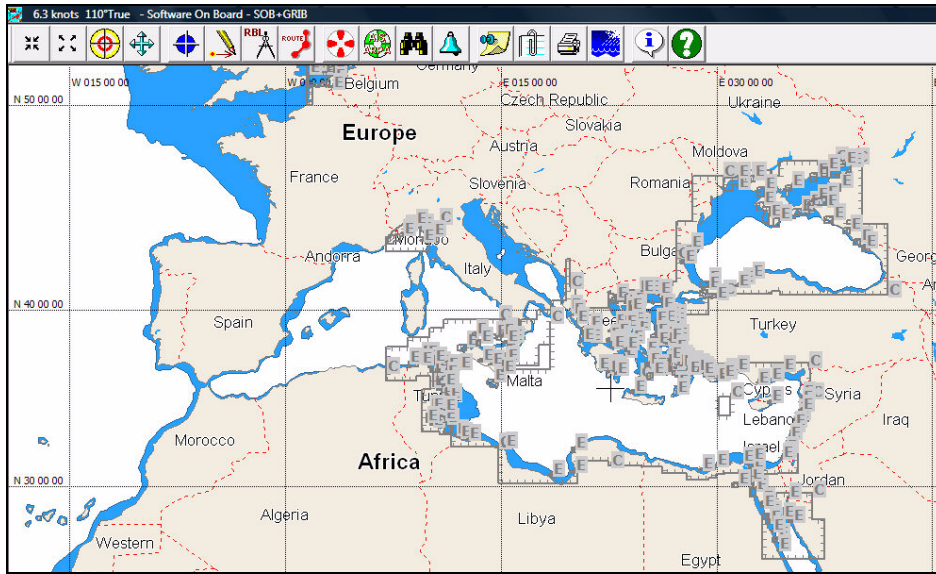
- Final test is, of course, to view the chart detail in SOB. "Quick and easy" method is simply Pan to the chart area and Zoom in.

If this doesn't produce the chart detail you expect, then turn on "Chart Borders" (refer to SOB User Manual) and pan/zoom to an "overview" of the charted area. The displayed borders will quickly show if your chart is available:



With "Chart Borders" enabled, it is clear that New Zealand coverage is available from the Chart Card....

... and for the Med SD chart cartridge, the Chart Borders have been configured to show available Harbour-Level charts and clearly show the detailed charts installed for the Eastern Mediterranean:



end